

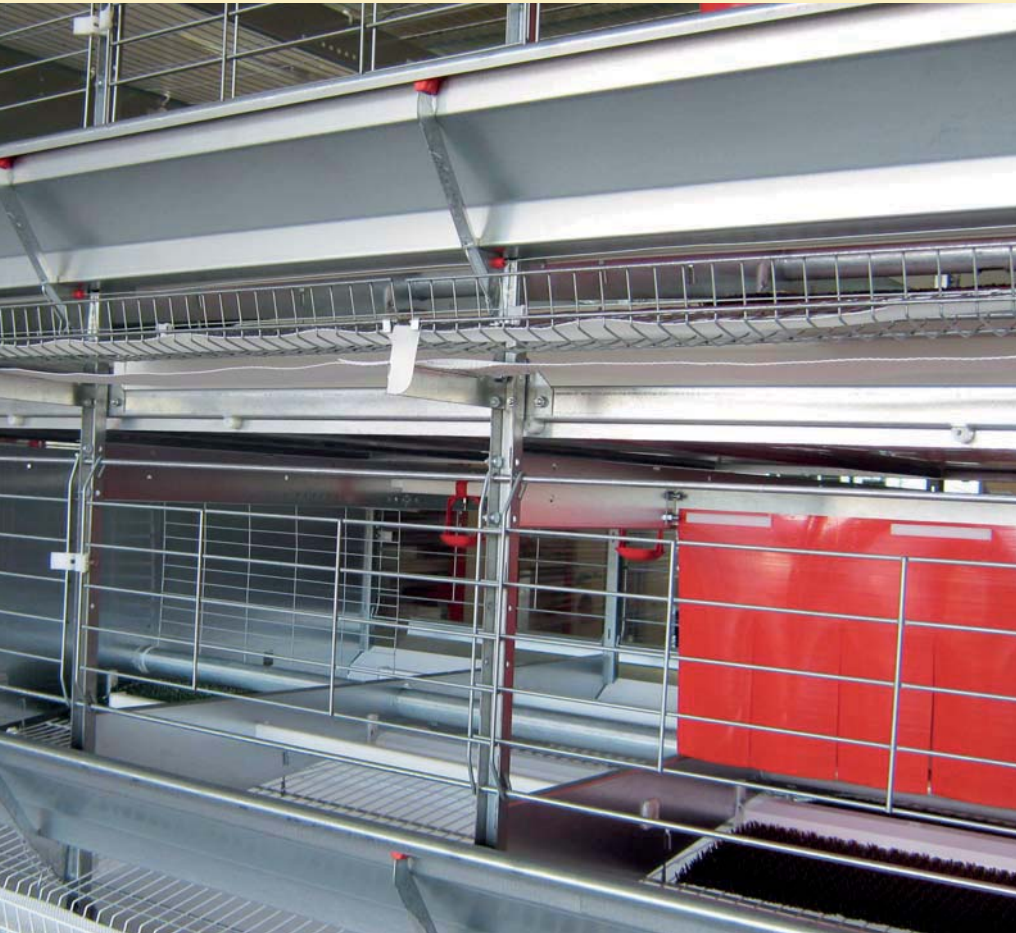
Farmer Automatic

# Enrichable System

Enriched Cage



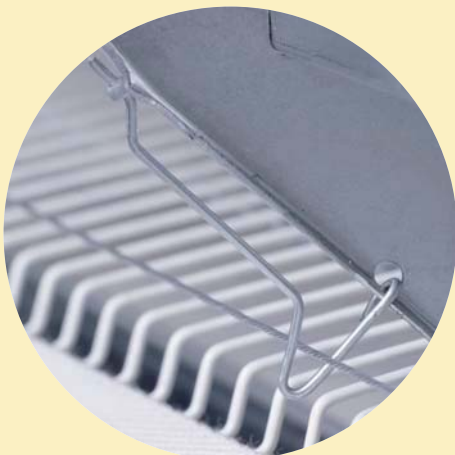
# Small-group compartments for e



## Pleasant environment

The Farmer Automatic Enrichable System with its large number of innovative details creates a pleasant, productive atmosphere for laying hens. Its partition walls provide fast, simple partitioning of the system.

- Plastic perches and smooth cage floors reduce stress for the birds and help to improve egg production and egg quality.
- The doors ensure spacious access to the cage.
- For 2012 the small group compartments may be fitted according to EU regulations with nesting boxes, perches, nail cutters and scratching area.



Patented, safe solution: egg-wire, minimizes cracks on eggs (EGGSAVER®)

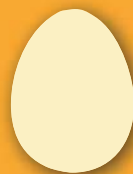


Fine-quality stainless steel manure belt scrapers



Living space and additional usable space: nest boxes accessible at all times

# Easy inspection



## Automatic feeding system

The proven Farmer Automatic chain feeding system is easy and reliable to handle. Long-lasting and wear-resistant, it ensures feed is distributed evenly and quickly with reduced feed loss and lower energy requirements.

## Automatic drinking system

The Farmer Automatic Enrichable System offers one drinking line per deck. The nipples and drip cups are easily accessible and ensure that all the birds on each tier have excellent access to water.



## Automatic egg collection

EGGSAVER® is the egg collection system developed and patented by Farmer Automatic to prevent eggs colliding with others already on the egg collecting belt. This is a straight-forward method that ensures that all eggs are safely collected with minimum cracking.

## Automatic manure removal

Manure is removed automatically from all decks on polypropylene manure belts. To extend the lifetime of the manure belts Farmer Automatic has developed special manure belt rollers which support the belts. Even in very long cage rows the manure belts run as easily as if on ball-bearings. Dust and feathers accumulating on the return belt are removed by a self moving dust spiral. Optionally an „overhead manure dryer“ or an air pipe system can be integrated.

## Advantages at a glance

- Proven multi-storey small group system
- Multi-deck solution saves on buildings and infrastructure
- Sturdy construction
- Galvanised sheet steel partition walls
- Labour-saving automation
- Automatic feeding and drinking systems
- Farmer Automatic feeding chain
- Stainless steel drinking nipples
- Clean eggs
- Problem-free egg transportation
- Elevator system for gentle egg collection
- Egg saver system (EGGSAVER®)
- Minimum number of cracked eggs
- Automatic manure removal
- Manure belts running on positioned rollers
- Stainless steel manure belt scrapers
- Reduced ammonia build-up
- Healthier birds
- Clean environment for people and birds



Farmer Automatic

# Enrichable System

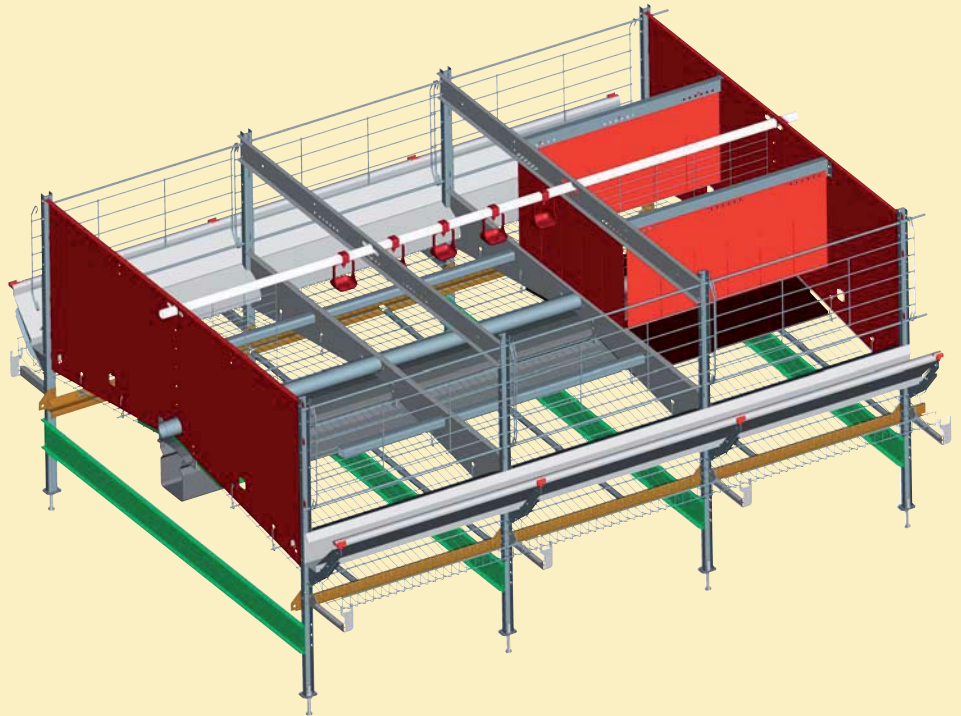
Enriched Cage



## Specifications

Cage dimensions	mm	inches
Width	1,800	70.9
Depth	1,250	49.2
Deck height	650	25.6
System width	1,630	64.2

System height	mm	inches
3 decks	2,250	88.6
4 decks	2,900	114.2
5 decks	3,550	139.8
6 decks with walkway	4,400	173.2
7 decks with walkway	5,050	198.8
8 decks with walkway	5,700	224.4



The system can easily be adapted to comply with the European directive governing enriched cage systems for layers (chapter III article 6).

## German-made success

Farmer Automatic offers innovative products for ultramodern poultry farming. With more than 45 years of experience in the market worldwide, we produce and sell complete solutions from a single source with a

range of products designed to be always flexible and adapt to poultry farmers' individual requirements. As a personally managed family company we work as partners to our customers, always on hand to

provide effective support for their long-term success. Together we work towards real growth so that we are always one step ahead of the demands of the market.

Dealer



Farmer Automatic • Josef Kühlmann GmbH & Co. KG

Königstraße 51 • 48366 Laer • Germany • Phone: +49 (0) 25 54 - 911 - 0 • Fax: +49 (0) 25 54 - 911 - 66 • [www.farmerautomatic.de](http://www.farmerautomatic.de)